

# LED LAMP FLOOD LAMP GENERAL

www.aigostar.com



10W/20W/30W/50W



80W



100W

NATURAL WHITE 4100K

PACKING 1pc/colour box

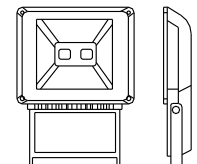
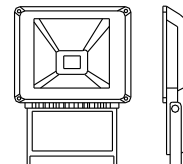
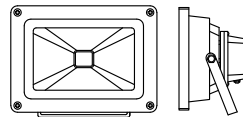
V	AC85-265V	On/Cycles	≥20,000
	40000H	Hg	0%
IP	65		optimal Ta=-10°~40°

### Size

LED FL 10W B:115X85X75mm  
LED FL 20W B:180X140X92mm  
LED FL 30W B:227X187X103mm  
LED FL 50W B:285X235X120mm

LED FL 80W B:355X282X85mm

LED FL 100W B:355X285X97mm



product code	Model	K	W	LM	PCS/CTN	EEL	certification
000683	LED FL 10W	4100K	10	800	36	A	CE, ROHS
178796	LED FL 20W	4100K	20	1600	18	A	CE, ROHS
000690	LED FL 30W	4100K	30	2400	12	A	CE, ROHS
178802	LED FL 50W	4100K	50	4000	6	A	CE, ROHS
000706	LED FL 80W	4100K	80	6400	4	A	CE, ROHS
000713	LED FL 100W	4100K	100	8000	4	A	CE, ROHS



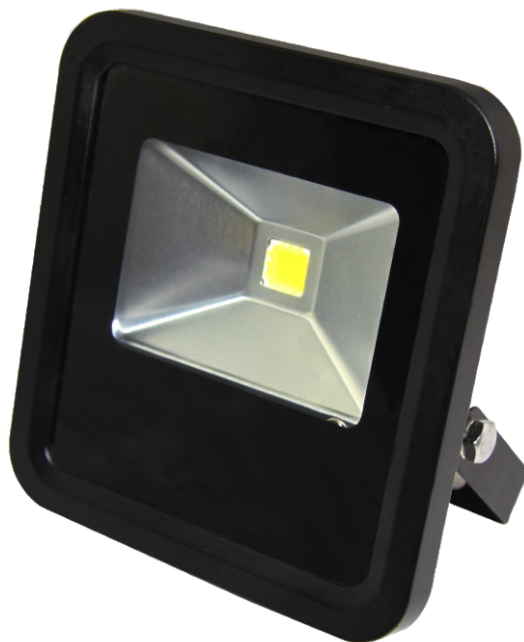
### warning

- Fitting should be carried out by qualified electricians as per the instruction manual.
- Non-dimmable product. Do not install this product into any dimmer.
- Switch off power before installation. •Hands must be dry during installation.
- When replacing LED lamp, beware of electric shock and the heat that has accumulated.

# LED LAMP FLOOD LAMP

SLIM

www.aigostar.com

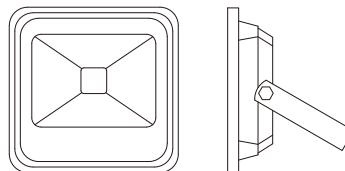


NATURAL WHITE **4100K** PACKING 1pc/colour box

<b>V</b>	100-240V	On/Off	≥20,000
	50000H		120°
<b>Ra</b>	≥70	<b>Hg</b>	0%
<b>PF</b>	> 0.95		optimal Ta=-20°~65°
<b>IP</b>	65		

## Size

LED SFL 10W B: 127x120x45mm  
LED SFL 20W B: 185x178x45mm  
LED SFL 30W B: 227x222x50mm  
LED SFL 50W B: 284x273x65mm



product code	Model	K	W	=		LM	Chip QTY	PCS/CTN	EEl	kWh/1000h	certification
179656	LED SFL 10W	4100K	10		20	800	9	30	A	10	CE, ROHS
179663	LED SFL 20W	4100K	20		40	1600	20	20	A	20	CE, ROHS
179670	LED SFL 30W	4100K	30		70	2400	30	16	A	30	CE, ROHS
179687	LED SFL 50W	4100K	50		120	4000	50	10	A	40	CE, ROHS



### warning

- Fitting should be carried out by qualified electricians as per the instruction manual.
- Non-dimmable product. Do not install this product into any dimmer.
- Switch off power before installation. •Hands must be dry during installation.
- When replacing LED lamp, beware of electric shock and the heat that has accumulated.